



# The PowerLogic™ Meter Range

Presented by: Rene Jonker, Director Strategy & Offer Marketing – Power Monitoring Hardware

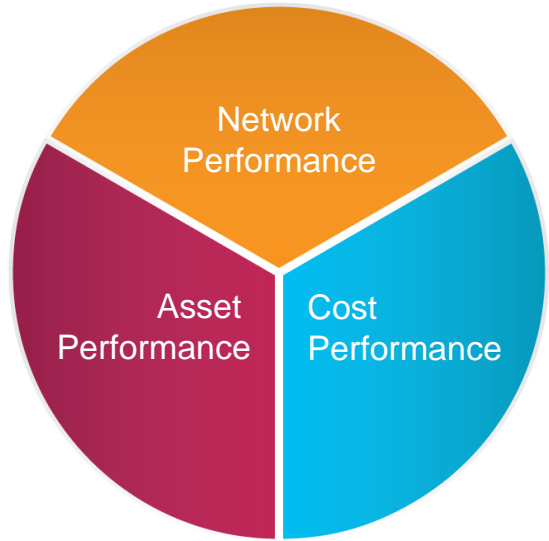
# Our Customers Voice

## Improve Electrical Reliability

“Help my enterprise run reliably”

## Improve Electrical Asset Performance

“Help me make my equipment run optimally”



## Improve Financial Performance

“Help me save money on my utility costs”

# Our Value Proposition

Our customers face major challenges with their Power needs

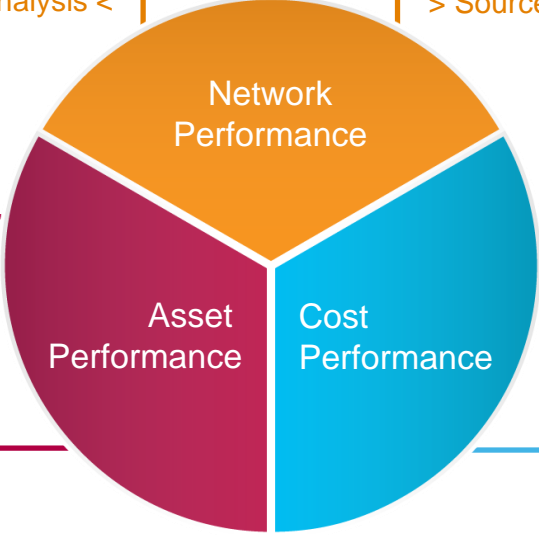
- ❖ Regulatory Compliance
- ❖ Unpredictable Power Outages
- ❖ Access to Information
- ❖ Energy Cost Volatility

## Improve Electrical Reliability



## Improve Electrical Asset Performance

- Asset information & monitoring <
- Asset use optimization <
- Maintenance management <
- Critical asset management <



## Improve Financial Performance

- Increased savings and sustainability
- > WAGES
- > Cost allocation
- > Energy usage optimization
- > Energy cost optimization
- > Green standard compliance

# Schneider Electric Canada Meter Range

Cost Performance  
Network Performance  
Asset Performance

Functionality



Retrofit	Multi-Circuit	Basic	Intermediate	Advanced / Utility
----------	---------------	-------	--------------	--------------------

- Simple energy and power measurement
- Sub metering for cost allocation and analysis

- Compact power measurement with revenue-grade accuracy\*
- Sub metering for multi-user environments

- High-end cost management, simple network management
- Sub metering and feeders

- Network management and power quality
- Critical loads

- Advanced Power Quality event detection
- Feeders, mains and critical loads

# Applications: Small/medium buildings

## LV incomer



PM5x00



Masterpact MTZ + μL X



Energy cost management  
Bill verification (energy)



## HVAC, lighting & secondary switchboard



PM5x00



EM4200



EM4300



BCPM



## Strategic loads

Asset management (availability)



PM5X00



PM8000

Network performance



Masterpact MTZ + μL X



# Applications: Large buildings

## MV incomer



PM8000 ION7650

Network performance  
(harmonics, SER, waveform  
capture, logging, trending)

Bill verification

Power quality compliance



## Genset



PM5x00

Network performance  
(Harmonics, logging,  
trending ...)

## Shop or office



PM5x00

Energy cost management  
(Billing, sub-billing)

## Standard loads

Energy cost management



BCPM



EM4x00



EM4300



Masterpact  
MTZ + µL X

## Strategic loads

Asset management (availability)

Network performance



PM8000



Masterpact  
MTZ + µL X

# Applications: Data centers

## MV incomer



ION7650

Network performance  
(harmonics, SER, waveform capture, logging, trending)

Bill verification

Power quality compliance

## HVAC, lighting, office



EM3500



PM5x00

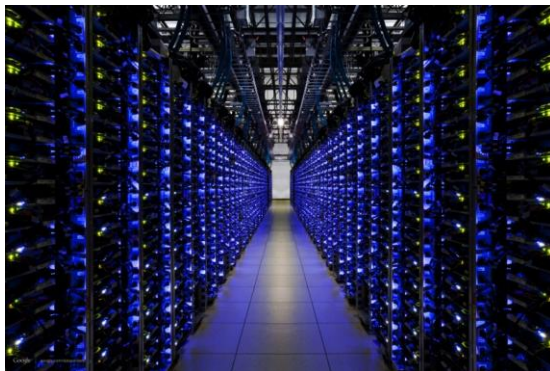
Energy cost mgt.

## Genset



PM8000

Network performance  
(Harmonics, SER, waveform capture, logging, trending ...)



## PDU

Network performance  
(Harmonics, logging, trending ...)



PM5x00

Energy cost management



BCPM

Sub-billing



PM5x00



iEM3x00

## Critical loads



PM8000



PM5x00

Network performance  
(Harmonics, SER, waveform capture, logging, trending ...)

# Applications: Industry

## MV incomer



ION7650

Network performance  
(harmonics, SER, waveform  
capture, logging, trending)

Bill verification

Power quality compliance



## HVAC, lighting, office



PM5x00



BCPM



EM4200



EM4300

Energy cost mgt.



## Genset



PM8000

Network performance  
(Harmonics, SER, waveform  
capture, logging, trending ...)

## Critical loads



PM8000



PM5X00

Network performance  
(Harmonics, SER, waveform  
capture, logging, trending ...)



# Applications: Healthcare

*Indicates embedded metering*

*Indicates stand-alone metering*

## MV incomer



ION7650

Network performance  
(harmonics, SER, waveform  
capture, logging, trending)

Bill verification

Power quality compliance



## Genset



PM8000

Network performance  
(Harmonics, SER, waveform  
capture, logging, trending ...)

## HVAC, lighting, office



Energy cost management



PM5x00



BCPM



EM4200



EM4300

## Critical loads (operating theatre, intensive care)



Network performance  
(Harmonics, SER, waveform capture, logging,  
trending ...)



PM8000



PM5X00

# Energy Cost Management

## Segments

- Commercial buildings (multi-tenant)
- Residential buildings (multi-unit)
- Industrial facilities
- Data centers
- Infrastructure projects (telecommunications)



## Metering Needs:

- ✓ **Low Total Cost of Ownership**
- ✓ **Multiple Form Factors & Easy Installation**
- ✓ **Multi-Protocol (Modbus, BMS, Serial/IP)**
- ✓ **Energy Accuracy – 0.5S/0.2S (IEC61052/53)**
- ✓ **Regulatory Compliance (RMICAN)**
- ✓ **Multi-tariff & Time of Use**
- ✓ **IEC61557-12 compliance**
- ✓ **Onboard Energy Logging**

# Network Management

## Segments

- Industrial facilities
- Data centers
- Infrastructure projects  
(telecommunications)



## Metering Needs:

- ✓ **Disturbance Direction Detection**
- ✓ **Sequence of Event**
- ✓ **Breaker Monitoring & Aging**
- ✓ **Event Playback & Root Cause Analysis**
- ✓ **Transient Detection, Waveform Capture, Power Quality Compliance Reporting**
- ✓ **Power Quality Monitoring** (Harmonics, Sag/Swell, Unbalances, Flicker, Transients, SOE)
- ✓ **Compliance to Standards** (IEC61000-4-30, EN50160, IEC62586, IEEE 519)
- ✓ **Programmable Logic, Alarming & Control**
- ✓ **Multi-Protocol & Multi-Port** (Modbus, DNP, IEC61850, DLMS, BMS)
- ✓ **Multi-Channel Load Profiling**

# 2016 Canada Offer Roadmap



## EM4200 Series (Enercept)

- Complete refresh of Enercept platform
- Expanded protocols
- More CT flexibility



## EM4300 Series Wireless

- New wireless range for retrofit of existing buildings.
- Transmits data to Com'X



## ION7400 Utility Feeder Meter

- Lower cost complement to 8650 feeder monitoring
- Based on PM8000



## PM5000\* BMS

- Firmware evolution of Ethernet PM53xx & PM55xx
- Addition of BACnet/IP



## Com'X 510 (EBX510)

- Entry Level Energy Management
- Logging for non-logging devices



## Link 150 (EGX150)

- Simple cost effective serial to Ethernet Gateway
- Updated replacement for EGX100/TSXETG100



# Questions?